

State of Wyoming Corner Record

(In compliance with the **CORNER PERPETUATION AND FILING ACT**, Wyoming Statutes, 1977 Section 36-11-101, et. seq., and the Rules and Regulations of the Board of Professional Engineers and Professional Land Surveyors)

Reverse side of this form may be used if more space is needed.

Record of original survey and citation of source of historical information (if corner is lost or obliterated). Description of corner monumentation evidence found and/or monument and accessories established to perpetuate the location of this corner. Sketch of relative location of monument, accessories, and reference points with course and distance to adjacent corner(s) (if determined in this survey). Method and rationale for reestablishment of lost or obliterated corner.

FOUND: PINK GRANITE STONE
20" X 14" X 10" WITH
" W " CHISELED ON SOUTH FACE

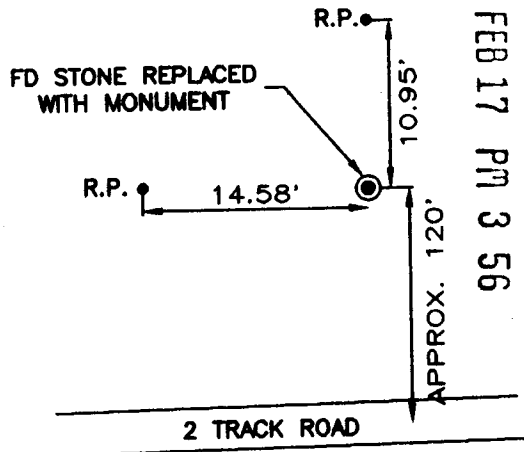
GLO RECORD: SET GRANITE BOULDER 16" X 10" X 6"
MARKED " WC 1/4 " FOR 1/4 SECTION
CORNER ON TOP OF BLUFFS, 25 LINKS
NORTH OF ACTUAL POSITION

SET: 3" ALUMINUM CAP ON 5/8" X 24"
REBAR STAMPED. SEE INSCRIPTION
SKETCH.

REFERENCES: SET 5/8" X 24" REBAR WITH 2.0"
ALUMINUM CAP STAMPED " I.M.P.S.
566 " FOR REFERENCE POINTS

Reference Locations

NOTE: MONUMENTS FALLS ON TOP OF BLUFF



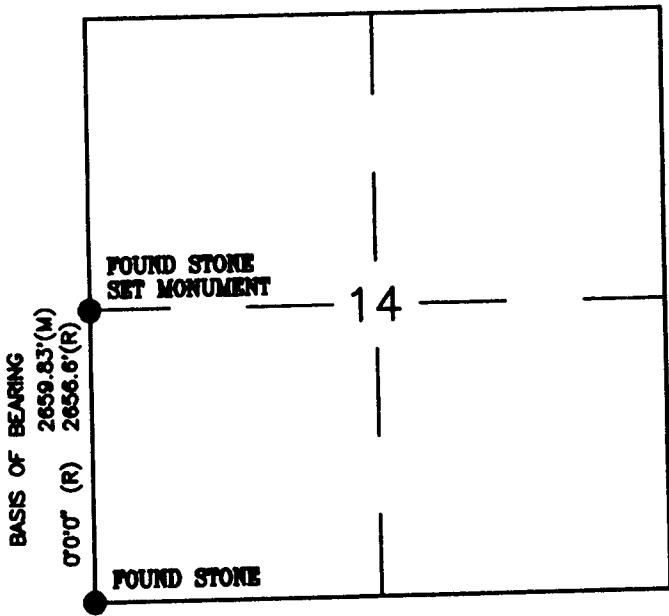
98 FEB 17 PM 3 56

LARAMIE COUNTY CLERK
CHEYENNE, WY.

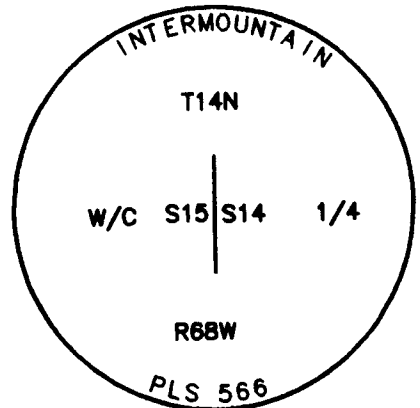
218700

NOTE: BURIED STONE NEXT TO MONUMENT AS MEMORIAL

Monument Location



Monument Inscription



Date of Field Work: 11/5/97

Office Reference: 3084

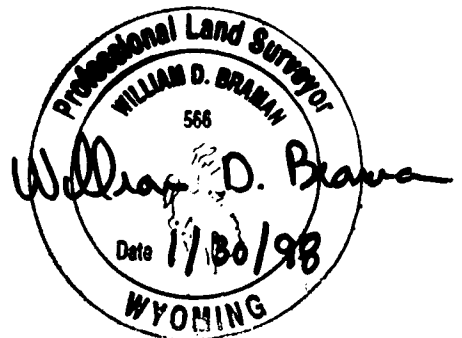
Cross Index Plat

	1	2	3	4	5	6	7	8	9	10	11	12	13	14	15	16	17	18	19	20	21	22	23	24	25
A																									
B																									
C																									
D																									
E																									
F																									
G																									
H																									
I																									
J																									
K																									
L																									
M																									
N																									
O																									
P																									
Q																									
R																									
S																									
T																									
U																									
V																									
W																									
X																									
Y																									
Z																									

Firm/Agency, Address
 INTERMOUNTAIN
 PROFESSIONAL SERVICES
 5801 OSAGE AVENUE
 CHEYENNE, WYOMING 82009
 Ph: (307) 632-3138
 Fax: (307) 632-3194

This corner record was prepared by me or under my direction and supervision.

SEAL & SIGNATURE



Corner Name WITNESS CORNER Section 14, T 14 N, R 68 W, 6th P.M.
 County: LARAMIE Wyoming

Cross-Index No.: L-17

BOOK 1472

1573